



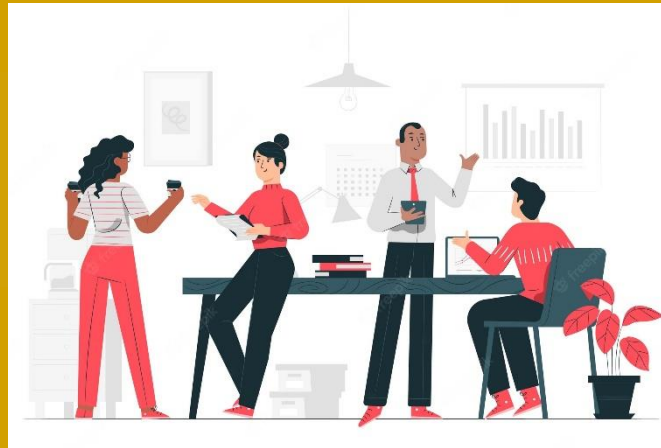
# 1) SHI Accreditation

In terms of the SH Act, the SHRA is mandated to accredit Social Housing Institutions (SHIs) for the purpose of ensuring that there is the requisite SHI capacity (that is viable and sustainable over the long-term) that has the capability to develop, own and manage Social Housing Stock and its related tenancies. Accredited SHIs gain access to the Capital Grant (CCG) required to develop and deliver SH stock

To support aspirant SHI applicants, SHRA has put in place this phased training programme targeting the areas where there is evidence demand and supply gaps. Those attending will need to commit to all these modules

To Register click <https://forms.office.com/r/2SsB1zD78X> and fill in your details in full select the topic and date of your choice

Introduction To Social Housing module 1(2days)  
Aug 16<sup>th</sup> – 17<sup>th</sup> 2022 (Bloem)  
Nov 1<sup>st</sup> – 2<sup>nd</sup> 2022 (Umtata)  
Dec 1<sup>st</sup> – 2<sup>nd</sup> 2022 (Nelspruit)



The Business of Social Housing Institution module 2 (3days)  
Establishing a Social Housing Institution (governance, legal form, financial viability etc)  
Business Planning & Strategy development  
Policy development  
Preparing the formal accreditation application  
Project  
Aug 24<sup>th</sup> – 26<sup>th</sup> 2022 (Bloem)  
Nov 22<sup>nd</sup> – 24<sup>th</sup> 2022 (Umtata)  
Dec 7<sup>th</sup> – 9<sup>th</sup> 2022 (Nelspruit)



## 2) SH Project Accreditation

An Accredited Social Housing Project is a project which meets the 7 minimum Investment criteria and such a project may access the Capital Grant funding as stipulated in the Social Housing Act. The Act further provides for ODA project accreditation and requires the SHRA to make regulations around accreditation of ODA projects, access to the Capital Grant as well as grant agreement monitoring.

SHRA is running a 2day Project Feasibility and Packaging Tools training and a 1day ODA Accreditation training to assist owners of projects in understanding the project accreditation application processes. The Project Feasibility and Packaging training is recommended for many who are already accredited SHIs, Developers, or would be SHIs or Developers with interest in understanding project accreditation application process of the SHRA. The ODA accreditation training on the other hand is an extension module for mainly private developers or non-SHIs

To Register click <https://forms.office.com/r/qGBEeFsi4E> and fill in your details in full select the topic and date of your choice

### Project Feasibility & Packaging Tools (2days)

The session will take participants through two main tools used to assess potential Social Housing Project's technical feasibility and financial viability. Training is a practical hands- on training on these two project packaging and modelling tools – Quick Scan B & Quick Scan C.

Sept 6<sup>th</sup> – 7<sup>th</sup> 2022 (Bloemfontein)  
Nov 16<sup>th</sup> -17<sup>th</sup> 2022 (Umtata)  
Jan 25<sup>th</sup> – 26<sup>th</sup> 2023 (JHB)



### ODA Accreditation (1day)

Highly recommended for private developers or otherwise known as Other Delivery Agents (ODAs) . The session is aimed at unpacking the Organisational Due diligence assessment of an ODA submitting a potential SH project application to the SHRA.

Sept 8<sup>th</sup>, 2022 (Bloemfontein)  
Nov 18<sup>th</sup>, 2022 (Umtata)  
Jan 27<sup>th</sup>, 2023 (JHB)

### 3) Capacitating for inclusive growth

A Gender Equality Strategy for the Social Housing sector was developed in 2018. The Gender Mainstreaming project for Social Housing Sector emerged from this Gender Equity Strategy document. The project intent is to facilitate the creation of an environment within the Social Housing Sector wherein greater access and participation of women specifically across the social housing value chain can be realized.

SHRA also seeks to increase a pool of women suppliers of professional services such as training, business re-engineering, social facilitation, built environment professionals involved in packaging social housing projects, property and tenant management services.

*To Register click <https://forms.office.com/r/FE4h49zhQh> and fill in your details in full select the topic and date of your choice*

#### SUPPLIER DEVELOPMENT

Inclusive growth requires broad-based transformation to break down structural impediments to new economic activities, deconcentrate industries dominated by few participants, accelerate the inclusion of black South Africans and designated groups into jobs and businesses, and return to a path of rising per capita incomes for all. The SHRA is therefore required to facilitate and implement inclusive growth by using incentives and providing institutional capacity and support such that the inclusion of black South Africans and designated groups can be achieved. The emphasis should be on removing barriers and developing the capacity of the designated groups to have access and participate in the value chain

Calling all women suppliers of professional services such as training, business re-engineering, social facilitation, built environment professionals involved in packaging social housing projects, property, and tenant management services etc to supplier capacitation sessions as follows:

9 – Sept 2022 – (JHB)

11- Nov 2022 ( Online)

20 – Jan 2023 (Online)



## Registration

- Registering and participating in any of these trainings is at no cost. SHRA will however NOT cover delegates travel and lodging costs of delegates.
- Deadline for registration is two weeks before the scheduled date of the training event
- To register simply click on the link for each of the topics of interest and register your details
- For more enquiries, please phone or write to us at the following details below

## Enquiries

 **011 274 6200**

 [info@shra.org.za](mailto:info@shra.org.za)

 **John/Tumi/Dudu**